

# LoopStar® 745 and LoopStar® 745P

Cost-Effective Ethernet Over DS3 Solutions With Carrier-Class Management Capabilities



ADC's LoopStar 745 and LoopStar 745P provide the ideal solutions for delivering cost-effective, managed Ethernet over DS3 applications. These plug-and-play solutions deliver carrier-class performance allowing service providers to deliver low-cost, first-entry solutions for single customer scenarios.

The LoopStar 745 and LoopStar 745P can attach to an existing SONET Add Drop Multiplexer (ADM), DS3 fixed wireless link, or a leased DS3 facility. Two subscriber Ethernet ports enable prioritized traffic to be fed to the network. In a hub-and-spoke configuration, several LoopStar 745 and LoopStar 745P products can feed the LoopStar 750 or other aggregation switches and can be managed in-band through the DS3 connection. The LoopStar 745 and LoopStar 745P can also be paired back-to-back to deliver cost-effective, point-to-point Ethernet and TDM interconnections.

With the LoopStar 745 and LoopStar 745P, a carrier is able to enter a single customer location and capture Ethernet service revenue with low, first-cost solutions that can be deployed today and pay for themselves within a few months, without having to invest in a costly build-out of the metro network.

## Features

- 'Plug-and-play' platform and design
- LoopStar 700 Traffic Management
- LoopStar 700 In-band or out-of-band management
- Multi-level loopback testing
- Hands-off cable testing
- Circuit Emulation Services

## Benefits

- Deliver a low, first-cost managed solution for Ethernet-to-DS3 applications
- 'Plug-and-Play' design makes the LoopStar 745 and LoopStar 745P easy to configure and provision
- Packet-based converged access switch allows full utilization of available bandwidth
- Hands-off cable testing for both the network and Ethernet connections
- Compact design makes them simple to install at the customer premise, either as wall-mounted or rack-mounted units
- Customer traffic classification, supporting up to 10 traffic rules per device, as well as VLAN management, traffic queuing, rate limiting and policing
- Extend IP management visibility all the way to the remote customer edge, eliminating truck rolls
- Provide automated verification of DS3, DS1 and 10/100 links
- Give carriers a fast, accurate way to pinpoint cabling problems, saving time and money
- Toll quality end-to-end delivery of circuit-based TDM services

SPEC SHEET



[www.adc.com](http://www.adc.com) • +1-952-938-8080 • 1-800-366-3891



# LoopStar® 745 and LoopStar® 745P

Cost-Effective Ethernet Over DS3 Solutions With Carrier-Class Management Capabilities

## Deliver Management and Service Intelligence to the Remote Customer Edge

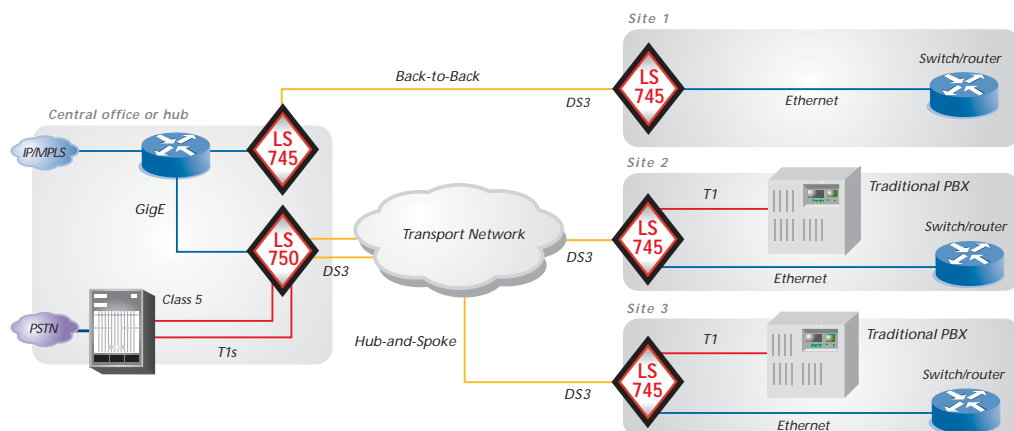
Using the LoopStar 745 and LoopStar 745P in conjunction with the LoopStar 700 or LoopStar 722 delivers the greatest value to the customer, as the intelligent services and capabilities of the LoopStar 700 management suite can be fully leveraged at the customer demarcation point via a hub-and-spoke configuration. With a single LoopStar 722 or LoopStar 750 serving as the hub, up to nine LoopStar 745 and LoopStar 745P units can be deployed across a metropolitan area, an office park or up the risers in a multi-tenant building to deliver managed Ethernet services.

In this configuration, each of the LoopStar units can be managed in-band via a management VLAN or out-of-band via Ethernet. The management suite's remote management capability allows carriers to extend IP management visibility all the way to the remote customer edge. From a single operator viewpoint, a full range of performance statistics, loopback diagnostics, cable integrity testing, and differentiated service definition allows the carrier to remotely manage and provision each individual LoopStar 745 and LoopStar 745P without ever having to touch the unit itself. Customers can be managed remotely and new services can be turned up quickly and easily without any truck rolls, providing huge operational savings.

The LoopStar 745 and LoopStar 745P also offer two hands-off cable tests—one for the DS3 uplink and one for the customer's Ethernet connection using a built-in Time Domain Reflectometer (TDR).

## Applications:

- Ethernet-enable an existing SONET ADM
- Back-to-back Ethernet over DS3 facilities
- High-speed Internet access
- Storage Networks
- Voice over IP (VoIP) or TDM voice interconnect



*The LoopStar 745 and LoopStar 745P deliver cost-effective Ethernet and/or T1 services over DS3.*



# LoopStar® 745 and LoopStar® 745P

Cost-Effective Ethernet Over DS3 Solutions With Carrier-Class Management Capabilities

## Specifications

### Interfaces

- 2 x 10/100 (RJ45)
- 1 x DS3 (BNC)
- 1 x T1 (RJ48c) (LoopStar 45+ only)
- 10/100 management port

### Protocols

- 802.1p Prioritization
- 802.1Q VLAN tagging/switching/stacking

### Management

- In-band management VLAN
- Web-based management GUI
- SNMP agent with standard MIBs
- FTP client download
- LoopStar 700 intelligent management

### Ethernet Services

- 802.1p prioritization
- 802.1Q VLAN tagging/switching/stacking
- Rate limiting: 128-500 kb/s increments
- CoS: WRR or strict priority based on VLAN, p-bits or ToS/DSCP

### Maintenance

- DS1 loopback
- DS3 loopback and PM
- 10/100 loopbacks and PM
- Ethernet cable testing with TDR

### Power

- AC Power: 100-240 V auto ranging, 47-63Hz
- DC Power: Dual DC Feeds  
-48 VDC, nominal (-40 to -60VDC) or 24 VDC

### Physical

- 1RU 1.75" x 17" x 7.25" (h x w x d)
- 0° to 50° C (operating)
- Rack or wall mounting options

### Regulatory

- UL 60950, EN 60950
- CE Mark
- FCC Part 15, Class B
- EN55022 Class B
- NEBS Level 3 certified
- Full front access (ETSI form factor)

09/06 • 102158AE LoopStar® 745 and LoopStar® 745P

## Ordering Information

Description	Catalog Number
LPS-745 AC Package (2 10/100BT, DS3 uplink) *Includes: 1 AC power supply and AC power cord, 19" and 23" rack mount brackets, license for basic software and documentation	LPS-745-AC L1
LPS-745-48VDC Package (2 10/100BT, DS3 uplink) -1 RU Chassis *Includes: Internal dual feed - 48Vdc power supply, 19" and 23" rack mount brackets, license for basic software and documentation	LPS-745-48DC L1
LPS-745 24DC Package (2 10/100BT, DS3 uplink) *Includes: Internal dual feed - +24Vdc power supply, 19" and 23" rack mount brackets, license for basic software and documentation	LPS-745-24DC L1
LPS-745P AC Package, (1T1, 2 10/100BT, DS3 uplink) *Includes: 1AC power supply and AC power cord, 19" and 23" rack mount brackets, license for basic software and documentation	LPS-745P-AC L1
LPS-745 48P DC Package, (1T1, 2 10/100BT, DS3 uplink) - 1 RU Chassis *Includes: Internal dual feed -48dc power supply, 19" and 23" rack mount brackets, license for basic software and documentation	LPS-745P-48DC L1
LPS-745P 24VDC Package, (1T1, 2 10/100BT, DS3 uplink) *Includes: Internal dual feed +24Vdc power supply, 19" and 23" rack mount brackets, license for basic software and documentation	LPS-745P-24DC L1

SPEC SHEET



### Web Site: [www.adc.com](http://www.adc.com)

From North America, Call Toll Free: 1-800-366-3891 • Outside of North America: +1-952-938-8080

Fax: +1-952-917-3237 • For a listing of ADC's global sales office locations, please refer to our web site.

ADC Telecommunications, Inc., P.O. Box 1101, Minneapolis, Minnesota USA 55440-1101

Specifications published here are current as of the date of publication of this document. Because we are continuously improving our products, ADC reserves the right to change specifications without prior notice. At any time, you may verify product specifications by contacting our headquarters office in Minneapolis. ADC Telecommunications, Inc. views its patent portfolio as an important corporate asset and vigorously enforces its patents. Products or features contained herein may be covered by one or more U.S. or foreign patents. An Equal Opportunity Employer

102158AE 09/06 Original © 2006 ADC Telecommunications, Inc. All Rights Reserved